

Main Office

Add:No.6 Building , No.2999 Hutai Av, Baoshan district ,
Shanghai,China
Email:Infor@aikonchina.com
Website:www.aikonchina.com
www.aikoncontrol.com



Website

MOSCOW Office

Add:Moscow, Volokolamsk highway, 73,
office 210
Tel:+7-499-703-35-23 +7-800-333-10-74
Email:aikon@aikonrussia.ru
Website:www.aikonrussia.ru

PDS

Solar Pump Inverter



CAUTION
• Risk of electric shock
• Read the instruction manual before operation
• Disconnect supply and wait 5 minutes before working on this equipment



XIAOZHOU (SHANGHAI) FLUID CONTROL TECH CO.,LTD

SPECIAL FREQUENCY CONVERTER FOR WATERPUMP

PD S Solar Pump Inverter

Smartness & Reliability

- Self-adaptive MPPT technology with up to 99% efficiency
- 15-year market application experience in pump drive
- Smart IGBT module embedded
- Built-in overload and dry-run motor protection function

Cost effectiveness

- Plug-and-play system design
- Embedded pump protection functions
- Battery-free for most applications
- Easy to maintain

Flexibility

- Compatible with any IEC three-phase asynchronous motors
- Compatible with popular solar arrays



Aikon ·Xiaozhou (Shanghai) Control Tech /

is a scientific and technological research and development company, who started with pump, now focus on pump controller, loyal to pump control system. Now Xiaozhou's main product is pumps controllers, IoT, Industrial CloudPlatform.

Relying on powerful research /

and development and domestic production, Xiaozhou company enjoy a very high reputation of pump controllers in Middle EU, South Asia and Southeast Asia, Middle east and Africa, and central America.

Technical strength is /

our core competitiveness. Xiaozhou uphold the rigorous product concept, keep improving products and solutions for customers in China and all over the world. The company is located in Shanghai, a convenient port and cargo distribution center to facilitate the rapid delivery of goods for customers.

Aikon Solar Pump Working Demonstration

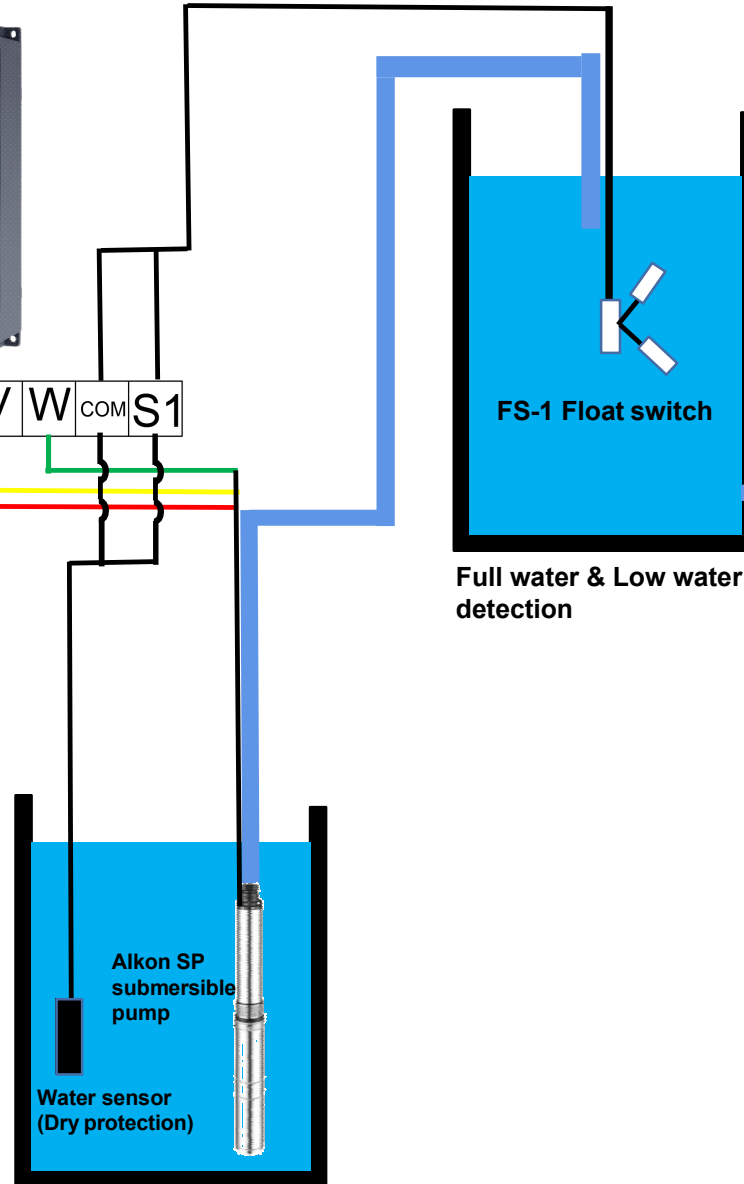
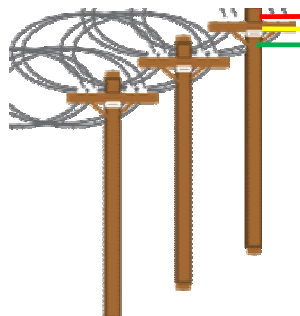
Solar DC Power



Aikon PD S Solar pump inverter



Standby AC Power



Applications

Drinking water



Irrigation



Swimming pool



Desert Control



PD S 1.5~7.5KW Datasheet

Controller Model PD S0D75K-2 PD S01D5K-2 PD S02D2K-2 PD S01D5K PD S02D2K PD S04D0K PD S05D5K PD S07D5K									
Input Data and PV Source									
Max input voltage(Voc) [V]	450V DC				800V DC				
Recommended voltage at MPPT	275-380V DC				500V DC - 750V DC				
Recommended PV array power [KW]	0.9~1.2	1.8~2.4	2.7~3.5	1.8~2.4	2.7~3.5	4.8~6.4	6.6~8.8	9~12	
Input voltage [V]	220V±15% AC single/three phase				380V±15% AC three phase				
Max Amps(RMS) [A]	8.2/4.9	14/8.4	23/11.5	5	5.8	10.5	14.6	20.5	
Output data									
Output rated power [KW]	0.75	1.5	2.2	1.5	2.2	4	5.5	7.5	
Output rated voltage [V]	220V±15% AC three phase				380V±15% AC three phase				
Max Amps(RMS) [A]	4.1	7	10	3.7	5	8.5	13	18	
Output Frequency	0-50/60HZ								
General Data									
Dimensions (H*W*D) [mm]	185*118*157						240*160*177		
Net weight [KG]	1.7	1.7	1.8	1.7	1.7	1.8	3.2	3.4	
Standadard warranty(month)	24								
Humidity & temperature	90%RH or less (no-condensation), -10 +40°C;Inverter will be derated if ambient temperature exceeds 40°C								
Cooling Mode	Forced air-cooling								
Protection rating	IP20/IP65								
Certification	CE / ISO9001								

PD S 75~220KW Datasheet

Controller Model PD S0075D PD S090D PD S0110D PD S0132D PD S0160D PD S0185D PD S0200D PD S0220D									
Input Data and PV Source									
Max input voltage(Voc) [V]	800V DC								
Recommended voltage at MPPT	500V DC - 750V DC								
Recommended PV array power [KW]	90~120	108~144	132~176	158~211	192~256	222~296	240~320	264~352	
Input voltage [V]	380V±15% AC three phase								
Max Amps(RMS) [A]	157	180	214	256	307	345	385	430	
Output data									
Output rated power [KW]	75	90	110	132	160	185	200	220	
Output rated voltage [V]	380V±15% AC three phase								
Max Amps(RMS) [A]	150	170	210	250	300	340	380	430	
Output Frequency	0-50/60HZ								
General Data									
Dimensions (H*W*D) [mm]	582*280*295	685*300*323		690*360*330	840*420*334		934*540*390		
Net weight [KG]	26.2	41	41	47	72	72	106	106	
Standadard warranty(month)	24								
Humidity & temperature	90%RH or less (no-condensation), -10 +40°C;Inverter will be derated if ambient temperature exceeds 40°C								
Cooling Mode	Forced air-cooling								
Protection rating	IP20/IP65								
Certification	CE / ISO9001								

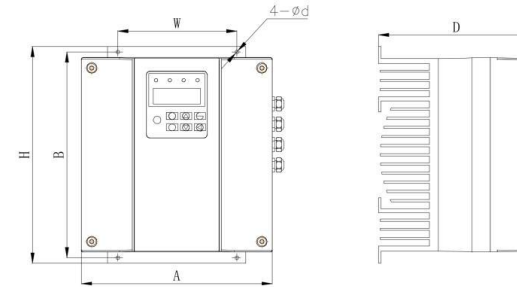
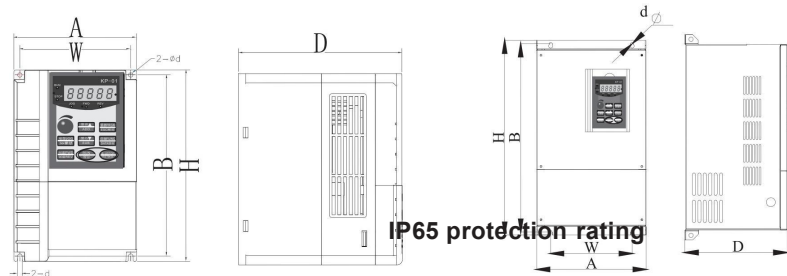
PD S 11~55KW Datasheet

Controller Model PD S0011D PD S0015D PD S0018D PD S0022D PD S0030D PD S0037D PD S 0045D PD S0055D									
Input Data and PV Source									
Max input voltage(Voc) [V]	800V DC								
Recommended voltage at MPPT	500V DC - 750V DC								
Recommended PV array power [KW]	13.2~17.6	18~24	2.7~3.5	22.2~35.2	36~48	44.4~59.2	54~72	66~88	
Input voltage [V]	380V±15% AC three phase								
Max Amps(RMS) [A]	26	35	38.5	46.5	62	76	92	113	
Output data									
Output rated power [KW]	11	15	18.5	22	30	37	45	55	
Output rated voltage [V]	380V±15% AC three phase								
Max Amps(RMS) [A]	24	30	37	46	58	75	90	110	
Output Frequency	0-50/60HZ								
General Data									
Dimensions (H*W*D) [mm]	240*160*177	321*220*198			411*220&238		453*255*237	582*280*295	
Net weight [KG]	3.65	5.65	6.45	6.5	12	12	16.5	26.2	
Standadard warranty(month)	24								
Humidity & temperature	90%RH or less (no-condensation), -10 +40°C;Inverter will be derated if ambient temperature exceeds 40°C								
Cooling Mode	Forced air-cooling								
Protection rating	IP20/IP65								
Certification	CE / ISO9001								

Controller Model PD S0250D PD S0280D PD S0315D PD S0350D PD S0400D PD S0450D PD S0500D PD S0560D									
Input Data and PV Source									
Max input voltage(Voc) [V]	800V DC								
Recommended voltage at MPPT	500V DC - 750V DC								
Recommended PV array power [KW]	300~400	336~448	378~504	420~560	480~640	540~720	600~800	672~896	
Input voltage [V]	380V±15% AC three phase								
Max Amps(RMS) [A]	468	525	590	665	785	870	965	1070	
Output data									
Output rated power [KW]	250	280	315	355	400	450	500	560	
Output rated voltage [V]	380V±15% AC three phase								
Max Amps(RMS) [A]	465	520	585	650	754	850	930	1050	
Output Frequency	0-50/60HZ								
General Data									
Dimensions (H*W*D) [mm]	934*540*390	1035*640*390			1200*860*400				
Net weight [KG]	106	107	140	140	205	205	210	210	
Standadard warranty(month)	24								
Humidity & temperature	90%RH or less (no-condensation), -10 +40°C;Inverter will be derated if ambient temperature exceeds 40°C								
Cooling Mode	Forced air-cooling								
Protection rating	IP20/IP65								
Certification	CE / ISO9001								

0.75~30KW

37~560KW



PD S IP 20 protection level dimensions

3PH 380V±15% 47PH~63H										
Model	Power (KW)	Input Current	output Current	Dimensions (mm)			Installation (mm)			Weight (Kg)
		(A)	(A)	A	H	D	W	B	d	
PD S01D5K	1.5	5	3.7	118	185	157	106	175	4.5	1.7
PD S02D2K	2.2	5.8	5							1.8
PD S04D0K	3.7	10.5	8.5							1.8
PD S05D5K	5.5	14.6	13	160	247	177	148	235	5.5	3.2
PD S07D5K	7.5	20.5	18							3.4
PD S0011D	11	26	24							3.65
PD S0015D	15	35	30	220	321	198	205	305	5.5	5.65
PD S0018D	18.5	38.5	37							6.45
PD S0022D	22	46.5	46							6.5
PD S0030D	30	62	58	220	411	238	160	395	7	12
PD S0037D	37	76	75							12
PD S0045D	45	92	90							16.5
PD S0055D	55	113	110	255	453	237	190	440	7	26.2
PD S0075D	75	157	150							26.2
PD S0090D	93	180	170							41
PD S0110D	110	214	210	300	685	323	200	667	11	40
PD S0132D	132	256	250							48.9
PD S0160D	160	307	300							72
PD S0185D	187	345	340	420	840	334	150*150	815	11	72
PD S0200D	200	385	380							106
PD S0220D	220	430	430							106
PD S0250D	250	468	465	540	934	390	200*200	893	13	106.3
PD S0280D	280	525	520							140
PD S0315D	315	590	585							140
PD S0350D	350	665	650	640	1035	390	250*250	1003	11	205
PD S0400D	400	785	754							205
PD S0450D	450	870	850							210
PD S0500D	500	965	930	860	1200	400	350*350	1164	15	210
PD S0560D	560	1070	1050							210

PDR 3PH AC380V±15%	POWER (kW)	POWER (HP)	INPUT CURRENT (A)	OUTPUT CURRENT (A)	Dimension (mm)			Installation Dimension (mm)			Weight (kg)	
					W	H	D	A	B	Ød		
PD S0D75K	0.75	1	3.80	2.50	165	195	130	178	105	4	2.5	
PD S01D5K	1.5	2	5.00	3.70								
PD S02D2K	2.2	3	5.80	5.00								
PD S04D0K	4	5.5	10.00	9.00	200	235	151	225	129	4	3.2	
PD S05D5K	5.5	7.5	14.60	13.00								
PD S07D5K	7.5	10	20.00	17.00								
PD S0011D	11	15	26	24	178	310	197	100	296	6	4.3	
PD S0015D	15	20	35	30								
PD S0018D	18.5	25	38.5	37								
PD S0022D	22	30	46.5	46	238	390	202	150	376	6	7.7	
PD S0030D	30	40	62	58								
PD S0037D	37	50	76	75								
PD S0045D	45	60	92	90	240	411	237	160	395	7	14.4	
PD S0055D	55	75	113	110								19.8
PD S0075D	75	90	157	150								31.4
PD S0090D	90	120	180	170	303	582	285	200	563	9	31.4	

The dimension is the same with IP20 VFD when horse power more than ≥110KW/150HP



IP20 protection rating



IP65 protection rating